

Once you've connected the VacGroom™ to your vacuum, you'll quickly notice how easy it is to use.

First, flip the Lock Switch (2) located on the top of the VacGroom™ to its unlocked position, turn your vacuum on and begin grooming your pet.

Once the comb is covered in fur, push the Lever (1) forward, which will allow the fur from the comb to be sucked up into your vacuum. Repeat this process until your pet is thoroughly groomed.

If your pet is scared of the vacuum cleaner, try grooming them with the vacuum off. Once the VacGroom™ is thoroughly clogged with fur, turn the vacuum on and push the Lever (1) forward allowing your pet's hair to be sucked up into your vacuum. Turn the vacuum off and repeat the process until your pet is thoroughly groomed.

Keep in mind that you know your pet and how they will react best. With repeated exposure to the VacGroom™, your pet will become trained to accept and even enjoy the process. Do not use the VacGroom™ if it causes an unreasonable level of stress, fear or aggression in your pet.

**PROBLEMS OR QUESTIONS?** Email us at [consumerservice@pennplax.com](mailto:consumerservice@pennplax.com), visit us at [www.penn-plax.com/customerservice](http://www.penn-plax.com/customerservice) or call 631-273-2059 (US & Canada Only)

© 2023 PENN-PLAX, INC., 35 MARCUS BLVD., HAUPPAUGE, NY 11788 USA. PRINTED IN CHINA 2305 SV



DOGV1-VacGroom-INSTRUCTIONS-05-2023-PP1137-FINAL.ai



# VACGROOM™ Vacuum Grooming Tool

Congratulations on the purchase of the VacGroom™, a revolutionary, powerful new grooming tool! Follow the instructions below and you and your pet will be enjoying the VacGroom™ in just a few short moments.

The VacGroom™ is designed to fit 32mm vacuum hoses, the most popular hose diameter on the market. Your vacuum will connect to the VacGroom™ either directly, or by using the enclosed adapter.



SCAN OR GO TO LINK:  
[www.pennplax.com/instructions](http://www.pennplax.com/instructions)



44 inch Reinforced Hose with Bridge Adapter

Grooming Tool



Vacuum suction trigger control

Universal Adapter



TWIST TO LOCK/UNLOCK



Stainless Steel Deshedding Comb



Stainless Steel Flea Comb



Upholstery and Cat Brush

## TO CONNECT TO UPRIGHT OR CANISTER VACUUM:

### STEP 1a



**STEP 1a:** If your vacuum has a long, flexible hose, you may choose to connect the VacGroom™ directly to your vacuum hose, without the use of an adapter. Simply insert the vacuum hose into the VacGroom™ as shown, and begin grooming.

If you need an **adapter**, see Step 1b. If you need an **extension** for a longer reach, see Step 2b.

### STEP 1b



**STEP 1b:** Attach the Universal Adapter to the end of your vacuum's intake hose.

To do so, insert the rubber end of the Universal Adapter into vacuum's intake hose and twist the screw counter-clockwise to tighten, expanding the rubber seal. This will create an airtight seal with the adapter and the hose.

You cannot overtighten the screw; continue to twist until it will no longer turn.



## TO CONNECT TO STICK VACUUM:

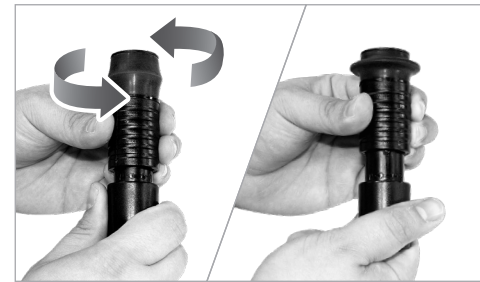
### STEP 2a



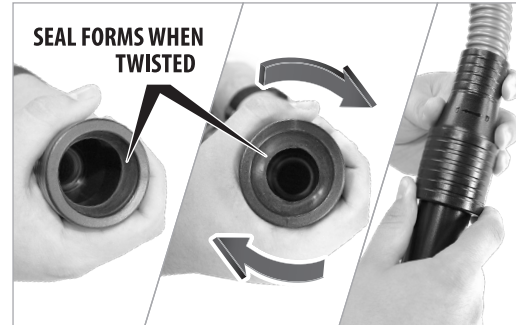
**STEP 2a:** Attach the Universal Adapter to the end of your vacuum's intake.

To do so, insert the rubber end of the Universal Adapter into vacuum's intake and twist the screw counter-clockwise to tighten, expanding the rubber seal. This will create an airtight seal with the adapter and the hose.

You cannot overtighten the screw; continue to twist until it will no longer turn.



### STEP 2b



**STEP 2b:** Attach the included Reinforced Hose. The Reinforced Hose attaches in a similar way the Universal Adapter attaches to your vacuum.

To do so, place the Reinforced Hose onto your vacuum's hose (or Universal Adapter) and twist the screw on the end of the hose tightly closed to create the airtight seal. **Ensure there is an airtight seal between rubber and hose.**

You cannot overtighten the screw; continue to twist until it will no longer turn.

## CHANGING COMBS

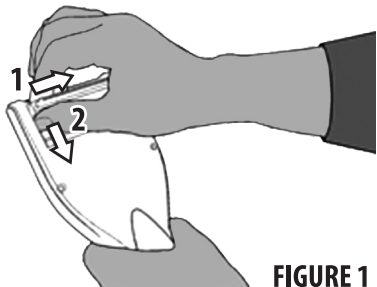


FIGURE 1

**To change between combs** on your VacGroom™, first unlock your VacGroom™ using the lock lever on the front of the VacGroom™. Next, hold the VacGroom™ face up, as shown in Figure 1.

Use your hand to push the VacGroom's™ comb to the right, then apply downward pressure to remove the comb from the VacGroom™.

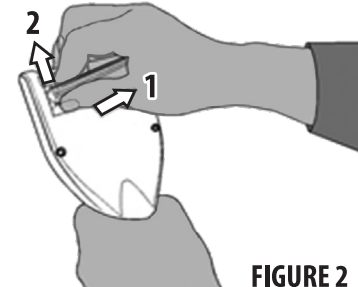


FIGURE 2

**To install another comb**, repeat this process in reverse, as shown in Figure 2. Insert the right side of the comb into the circular recess on the right side of the VacGroom™ and apply pressure towards the right side. At this point, you'll be able to push the left end of the comb upwards, where it will be locked into place.

To ensure that the comb is securely locked in place, press the lever on the VacGroom™ to allow the comb to move back and forth. If the comb moves freely, it is locked in place. If it does not move at all, repeat the process shown in Figure 2.